

Yellowknife United Church

Spring Newsletter 2009



Seasons and Reasons

Each year in November I get a notice in my email from University Hill United Church in Vancouver, advertising their Salt of the Earth: Christian Seasons Calendar. It comes in November because the Christian New Year is the first Sunday of Advent – either the last Sunday of November, or the first Sunday in December. University Hill United Church has done a good thing by publishing this calendar, especially for worship leaders, as it provides lots of information about the Christian year, the liturgical colours, and scripture passages that pertain to the varying seasons in the church year.

The Christian Year and the calendar year are quite different, but there are also some very interesting similarities. I am fascinated by the cycle of seasons and the way in which those seasons have influence on our lives. I am perhaps even more fascinated, having just come back from a warm vacation in a place where there is very little seasonal change and where the days are close to the same length all year round.

A very simple inquiry into the connection between Christian seasons and the secular calendar will reveal that important Christian dates are connected back beyond the beginnings of Christianity to important dates in the solar or lunar year. An example is Christmas which occurs so close to the Winter Solstice in the Northern Hemisphere. And I'm sure the connection between Easter – the celebration of resurrection and the resurrection of the earth from winter hibernation is more than just coincidence.

Christian seasons put before us a path to guide our thinking – the preparation times of Advent and Lent are set out to precede the high and holy days of Christmas and Easter, and in so doing they may reflect our own seasons in life's journey – introspection at some points in the year, and outward energy, joy and exuberance at others, often mirroring what the weather and the sun are doing around us.

I loved the warm sun, beach sand and water of the Pacific Ocean as we experienced it in Maui, but while we were there I could not help thinking about whether I would like it all year round. As much as it was a cold wakeup call to return north of sixty, there was also something reassuring and homely about coming back to winter weather (even though spring officially arrived while we were away). And yes, I mentioned on more than one occasion that Yellowknife has it all over Maui in terms of sunshine at this time of year at least.

I'm glad for the seasons and the hope they inspire – whether it be the hope brought about by the celebration of Easter – or the hope that comes from thinking ahead to warm and long days. I would also be completely in favour, if the people who live on the other side of the equator wanted to adjust their Christian calendar so it matched what they are experiencing out their windows and in their gardens, and if the people who live inside the lines we call the Tropic of Cancer and the Tropic of Capricorn want to mark time in a completely different way – that's okay with me too! So much of what is wrong in this world has come about because one group of people tried to fit another group of people into a box that they thought was suited for everyone, only to find out that it was anything but. In fact, I take certain delight in knowing that the Christian year – in large part, has been made to fit the earth cycles and seasons. There is something holistic about that I think.

Peter Chynoweth, Minister

Fundraising

Every year we try to think of new and different ways to raise funds for the church. Usually we try to go for the big ticket items such as the annual garage sale coming up on May 2, the talent auction from last year and the Memorial Hymn Sing. This year Stewardship has decided to try two new things in May which will become a regular part of the life of the church.

The first will be the “Sponsored Bulletin Program”. People of the congregation will have an opportunity to sign up and sponsor the bulletin for a specific week. The cost will be \$20 per week and the sponsor will be recognized in the church bulletin that week. It will be a great way to recognize special days or events in our lives.

The second program will be for birthday/anniversary recognition. This will provide an opportunity for people to recognize birthdays, anniversaries or other special events by putting change into a specific collection box earmarked for the Mission and Service Fund.

If you have any suggestions or ideas for other fundraising events, the Stewardship Committee would love to hear from you. You can contact Marg Henderson via email at margh@theedge.ca.

A cheerful delivery landed at our door on Saturday night, just in time for supper! The mouth-watering aromas immediately filled the room, driving the poor dog bonkers. The fruitful results of a hard fought bidding war at the annual YUC Talent Auction were thoroughly enjoyed by the successful bidders. The veritable feast included many courses selected from a custom menu, a bottle of fermented grapes to compliment and cream from magic Irish cows to top off the after dinner coffee. The experience required disciplined consumption in order to ensure room for the Death by Chocolate. Get your bid cards ready for the next auction – see you there!

Jeannette Hall



PAR- Your Questions answered

Many times throughout the year, during our announcements or in the bulletin we make reference to PAR. Many of you many have questions about PAR. and we hope to bring you the answers here. First of all, what does PAR stand for? PAR is pre authorized remittance and it is a way for you to give your church offering through an automatic bank deduction. The program is administered through the United Church General Council Office. No more remembering envelopes or writing cheques. It's an easy, no nonsense way to remember your church contributions each month.

How do we get involved? To register for PAR is easy. A quick call to the church office will have a registration form on its way to you. Just complete it and return it with a void cheque, (sorry, visa cannot be accepted) and we take care of the rest. Just remember to complete the portion allocating your givings. Deductions are made on a monthly basis about the 20th of each month.

What if I am already a PAR contributor and wish to make changes? Changes of any nature to your PAR registration can be made at anytime, not only at the beginning of the year. Your written request can be submitted to the church office, email is fine, and your changes will be made.

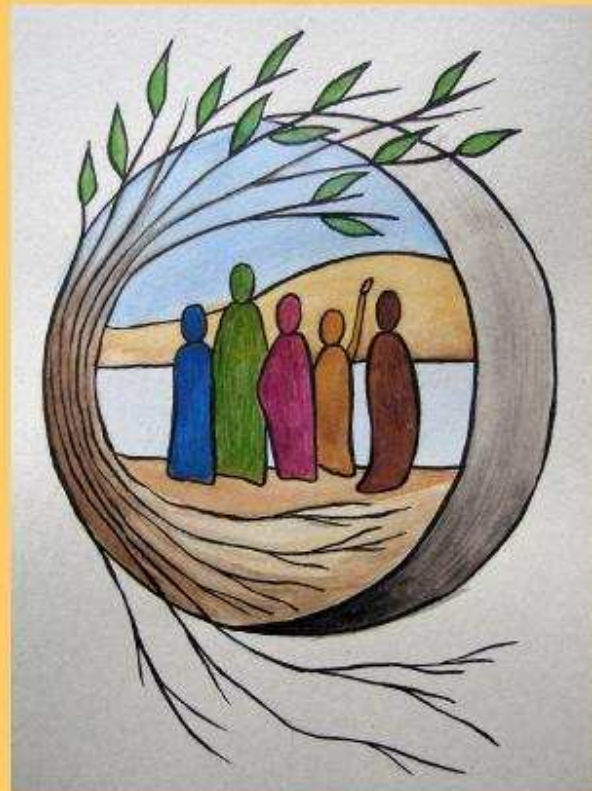
I am a PAR contributor, or would like to become one, but feel a little uncomfortable not placing anything in the collection plate when it passes by. No problem! We have small cards that you can place in the collection plate indicating your contribution has been made through PAR. Please call or drop by the church office to make arrangements to have some sent to you.

So you see, PAR is easy and simple, is one less thing you have to remember for church each Sunday and reduces paper as we have to order fewer church giving envelopes each year. If you have other questions or would like to make PAR arrangements, please call Gwyneth at the church office.

Western Women's Conference 2009
at Naramata Centre

WOMEN TOGETHER

The Common Walk of Generations



Session 1: Fri Sept 25 – Sun Sept 27

Session 2: Mon Sept 28 – Wed Sept 30

*A retreat for women of all ages.
A time to be nourished and inspired,
to connect, reflect and walk together!*

For more information please contact either Jan Stirling at 873-5731 or Marg Henderson at 873-4428 or via email at margh@theedge.ca.

Stewardship - Yellowknife United Church Offering Analysis 2008

Where do you fit in the chart below?

Range	# of Givers	Yearly Givings	Avg./Week	% of Givers	% of Total Amt.
\$1 to \$10	22	\$3,998	\$4	31%	5%
\$11 to \$20	22	\$17,617	\$15	31%	21%
\$21 to \$30	9	\$10,865	\$23	13%	13%
\$31 to \$40	4	\$7,140	\$34	6%	8%
\$41 to \$50	6	\$14,155	\$45	9%	16%
\$51 to \$60	2	\$5,770	\$55	3%	7%
\$61 to \$200	5	\$24,973	\$96	7%	30%
Totals	70	\$84,518		100%	100%

Here are a few interesting facts:

- Overall envelope offering for 2008 increased by 5% or \$3948 for a total yearly amount of \$84,518.
- Identified givers decreased from 75 to 70. There were seven new identified envelope users in 2008 while twelve families either moved or did not continue to support the church.
- 40 envelope givers increased the amount they gave in 2008 which resulted in increased givings of \$12,425.
- This was slightly offset by 23 envelope givers who decreased the amount they gave by a total of \$6,013.
- 13 envelope givers (19% of total givers) contributed 53% of the total amount received and of those 5 gave 30% of the full amount.
- Overall our givings did not meet the projected budget which was based on the pledge cards from the Stewardship Campaign. However thanks to our continued high rental revenue we were able to end the year with money left over.
- Amount of M&S givings exceeded our budgeted amount. The entire amount was all sent to the National Church.

Annual Garage Sale

Time to start thinking about spring cleaning? Remember those unwanted, unused, un-needed items could be another person's treasure. That is why we will be holding our annual garage sale on Saturday, May 2. It's a great opportunity to weed out your house and has the added benefit of helping the church. It is one of our major fund raisers for the year. In 2008 we raised \$1083 which was used towards local church operations. So remember to collect your items and we hope you will mark May 1 (evening set-up) and May 2 (morning sale) on your calendar. The sign-up sheet is already available on the side bulletin board and there are posters available on the side table. With your help we can make this year's sale even better. If you would like more information, please call Gwyneth Davis at 873-6291.



Looking for Additional Committee Members

The “work” of the Church does not just happen. It is a direct result of the commitment and caring that the Minister and the Congregation bring to the worship services, the church meetings, and the special events.

To support the “work” the Church has six standing committees:

- Worship is responsible for arranging for all worship services.
- Christian Development is responsible for arranging for Sunday School and other Christian education activities
- Outreach is responsible for promoting activities to support societal activities outside our church, both locally and globally.
- Community Life and Membership (CLAM) is responsible for welcoming people to our church and coordinating activities that help people feel that they belong.
- Stewardship is responsible for the financial health of the church and through the Property and Maintenance Sub-committee the physical property including the manse.
- Ministry and Personnel provide support for the Minister and administrative staff and is the liaison between the staff and the Congregation.

At the Annual Congregational Meeting to be held around the end of May the committees for 2009/10 will be presented. Additional help is needed on most committees. We also have a particular need for someone to fill the important positions of Vice-Chair and Treasurer of the Official Board. If you would like to help with a Committee or would like more information about a particular committee please contact Lloyd Henderson, Bruce Graney, or Joyce Caines of the Nominating Committee, or speak with Peter Chynoweth.

For the kids ...



What is the Easter Bunny’s favourite sport?
Basket-ball, of course!

Why was the Easter Bunny so upset?
He was having a bad hare day!

What would you get if you crossed a skunk with a type of
Easter candy?
Smelly beans!

Where does the Easter Bunny go when he needs a new tail?
To a re-tail store!

How many chocolate bunnies can you put into an empty Easter
basket?
One. After that the basket won’t be empty.